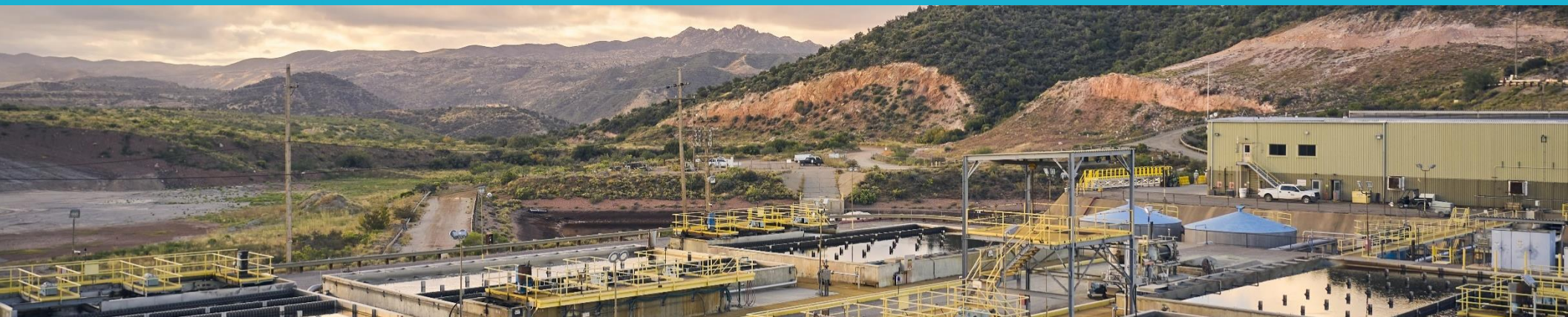




JETI

2024 Sustainability Update



Letter from the Acting CEO



Stepping into the role of Acting CEO at Jetti is both an honor and an exciting responsibility. Even in these first few weeks, I have been deeply impressed by the strength of our team, the quality of our partnerships, and the transformative potential of our technology.

Recent events have only reinforced the compelling logic for Jetti's technology. The turbulent economic and geopolitical background, particularly around critical minerals such as copper, has created significant uncertainty, making long-term investment difficult. At the same time, unprecedented operational disruptions mean that approximately 7% of global copper mine supply is currently offline, significantly impacting prices. These disruptions are likely to continue as copper projects, representing 25% of current global mine supply, are stalled due to regulatory, community and environmental issues.

It is therefore unsurprising that the International Energy Agency predicts that by 2035, the world could face a 30-40% copper supply deficit. In the U.S., despite its mineral wealth, domestic production still falls short of its potential, with falling domestic processing and growing dependence on Chinese copper smelters and refineries. Finally, many of the world's remaining deposits comprise predominantly of lower-grade primary sulfide ores, making them uneconomic to process with traditional concentrating, smelting or refining methods.

In this context, Jetti's commercially proven technology for maximizing economic reserves is increasingly relevant. Our technology increases cathode copper production directly at the mine site, delivering up to 300% higher copper recoveries from chalcopyrite when compared to traditional leaching processes. Jetti's technology also uses significantly less water than pyrometallurgy, an increasingly important advantage given the growing water stress in copper producing regions, which alone accounts for about 70% of U.S. output. Additionally, by deploying our catalyst at existing operations, we enhance circularity, since much of the material has already been mined, while also sustaining local jobs by keeping established operations productive.

Over the past year, we have taken meaningful steps to streamline and simplify our processes to facilitate the deployment of our technology at our partners' mines.

We have finalized a new simple and modular plant design, **Jetti in a Box**, making it easier to deploy, relocate and scale to meet client operational priorities - requiring only three connections: raffinate, water and power.

We have also developed new digital models, drawing on more than a decade of testing and real-world experience, to provide greater certainty and predictability of recovery performance for clients, thus accelerating our deployment cycle.

Our R&D programs continue to make excellent progress - most notably, the development of our next-generation catalyst formulation, which promises to deliver greater recoveries and improved performance for our clients across all operating conditions.

In 2024 we again delivered operationally, keeping our people safe, meeting our production objectives, and once again achieved excellent health and safety and environmental track performances.

These achievements reflect the strength and depth of Jetti's scientific, technical and operational team. I have been impressed not only by the team's skills and expertise but also by their dedication. I would like to thank everyone at Jetti for their continued commitment.

As the only commercially proven technology for economically leaching primary sulfides, the world's largest remaining copper resource, Jetti is uniquely positioned to support the delivery of the copper the world needs. Our technology can do this in a way that is sustainable, very low cost and with a much lower environmental footprint than traditional methods.

I look forward to the year ahead and the opportunity to create value for our clients, partners, team and communities.

Nelson Mora

Acting Chief Executive Officer

Sustainability Data Tables

We align our sustainability performance disclosures with the Sustainability Accounting Standards Board (SASB) Chemical Industry Standard. In addition, we provide diversity and demographics data aligned with Global Reporting Initiative (GRI) categories.

Note: not all percentages add to 100 due to rounding.

Greenhouse Gas (GHG) Emissions

Indicator	Unit	2021	2022	2023	2024
Scope 1 Emissions (RT-CH-110a.1)	Metric tons (t) CO2e		0	0	0
<i>Percent covered under emissions-limiting regulations (RT-CH-110a.1)</i>	Percent(%)	Not tracked	N/A	0	0
<i>Strategy to manage Scope 1 emissions (RT-CH-110a.2)</i>	Discussion and analysis		N/A	N/A	N/A
Scope 2 Total	Metric tons (t) CO2e		6.73	8.85	6.26
<i>Electricity</i>	Metric tons (t) CO2e	Not tracked	6.73	8.85	6.26
Scope 3 Total	Metric tons (t) CO2e		64,816	51,710	11,182
<i>Category 1: Purchased Goods and Services</i>	Metric tons (t) CO2e		61,227	48,486	7,941
<i>Category 2: Capital Goods</i>	Metric tons (t) CO2e		124	244	521
<i>Category 4: Upstream Transportation and Distribution</i>	Metric tons (t) CO2e		2,683	2,127	1,989
<i>Category 6: Business Travel</i>	Metric tons (t) CO2e	Not tracked	97	Not tracked, due to insignificant contribution to overall footprint.	
<i>Category 7: Employee Commuting</i>	Metric tons (t) CO2e		44		
<i>Category 8: Upstream Leased Assets</i>	Metric tons (t) CO2e		371	443	443
<i>Category 9: Downstream Transportation and Distribution</i>	Metric tons (t) CO2e		241	382	266
<i>Category 11: Use of Sold Products</i>	Metric tons (t) CO2e		27	27	21

Air Quality

Indicator	Unit	2021	2022	2023	2024
Air emissions: NOx(excluding N2O)(RT-CH-120a.1)	Metric tons (t)	Not applicable – any air emissions created during product development are tracked under the University of British Columbia, where our lab spaces are housed. Similarly, any air emissions associated with our catalytic technology at the mine site are tracked by the mining operation.			
Air emissions: SOx(RT-CH-120a.1)	Metric tons (t)				
Air emissions: Volatile organic compounds (VOCs) (RT-CH-120a.1)	Metric tons (t)				
Air emissions: Hazardous air pollutants (HAPs) (RT-CH-120a.1)	Metric tons (t)				

Energy Management

Indicator	Unit	2021	2022	2023	2024
Total energy consumed (RT-CH-130a.1)	Gigajoules(GJ)	Not tracked	56.96	108.17	95.27
Percentage grid electricity (RT-CH-130a.1)	Percent(%)		100	100	100
Percentage renewable ¹ (RT-CH-130a.1)	Percent(%)		0	0	0
Total self-generated energy (RT-CH-130a.1)	Gigajoules(GJ)		0	0	0

Water Management

Indicator	Unit	2021	2022	2023	2024
Total water withdrawn (RT-CH-140a.1)	Thousand cubic meters (m3)	Not tracked	0.14	0.18	0.25
<i>Percentage in regions with high baseline water stress (RT-CH-140a.1)</i>	Percent(%)		100	100	100
Total water consumed (RT-CH-140a.1)			0	0	0
<i>Percentage in regions with high baseline water stress (RT-CH-140a.1)</i>	Percent(%)		N/A	N/A	N/A
Incidents of non-compliance associated with water quality permits, standards and regulations	Number	0	0	0	0
Water management risks and strategies	Discussion and analysis	See page 19 of 2022 Sustainability Report.			

Hazardous Waste Management

Indicator	Unit	2021	2022	2023	2024
Hazardous waste generated (RT-CH-150a.1)	Metric tons (t)	Not tracked	0	0	0
<i>Percent recycled (RT-CH-150a.1)</i>	Percent(%)		N/A	N/A	N/A

¹ Refers only to renewable energy acquired above and beyond what is already in the grid.

Community Relations

Indicator	Unit	2021	2022	2023	2024
Discussion of engagement processes to manage risks and opportunities associated with community interests (RT-CH-210a.1)	Discussion and analysis	See page 11 of 2022 Sustainability Report.			

Workforce Health & Safety

Indicator	Unit	2021	2022	2023	2024
Total recordable incident rate: employees (RT-CH-320a.1)	Rate	0.0	0.0	0.0	0.0
Total recordable incident rate: contractors (RT-CH-320a.1)	Rate	0.0	0.0	0.0	0.0
Fatality rate: employees (RT-CH-320a.1)	Rate	0.0	0.0	0.0	0.0
Fatality rate: contractors (RT-CH-320a.1)	Rate	0.0	0.0	0.0	0.0

Diversity and Demographics

Indicator	Unit	2021	2022	2023	2024
Gender Diversity					
<i>Executives: Male</i>	Percent	80.00	80.00	75.00	67.00
<i>Executives: Female</i>	Percent	20.00	20.00	25.00	33.00
<i>Directors/Managers: Male</i>	Percent	In 2021, the gender breakdown for all non-executive employees was 68% male and 32% female.	66.67	81.25	88.00
<i>Directors/Managers: Female</i>	Percent		33.33	18.75	13.00
<i>Field/Operators: Male</i>	Percent		75.00	100.00	100.00
<i>Field/Operators: Female</i>	Percent		25.00	0.00	0.00
<i>Office/Professional: Male</i>	Percent		70.59	77.78	67.00
<i>Office/Professional: Female</i>	Percent		29.41	22.22	33.00
<i>Total: Male</i>	Percent		71.00	80.77	76.00
<i>Total: Female</i>	Percent		29.00	19.23	24.00

Indicator	Unit	2021	2022	2023	2024
Workforce by Location					
<i>US</i>	Percent	59	61	52	46
<i>Chile</i>	Percent	23	26	37	41
<i>Canada</i>	Percent	18	13	12	13
Local Nationals as a Percentage of Workforce					
<i>Chile</i>		Not tracked	100	89.47	84.21
<i>Canada</i>		Not tracked	80	66.67	66.67

Operational Safety and Emergency Preparedness

Indicator	Unit	2021	2022	2023	2024
Process Safety Incidents Count (PSIC) (RT-CH-540a.1)	Number	0.0	0.0	0.0	0.0
Process Safety Total Incident Rate (PSTIR) (RT-CH-540a.1)	Rate	0.0	0.0	0.0	0.0
Process Safety Incident Severity Rate (PSISR) (RT-CH-540a.1)	Rate	0.0	0.0	0.0	0.0
Number of transport incidents RT-CH-540a.2	Number	0.0	0.0	0.0	0.0

Product Lifecycle Management

Indicator	Unit	2021	2022	2023	2024
Revenue from products designed for use-phase resource efficiency (RT-CH-410a.1)	\$ USD	100% of Jetti's revenue is from products designed to improve copper mining's resource efficiency. As a privately-held company, we do not disclose revenue.			
Products containing genetically modified organisms (GMOs) (RT-CH-410c.1)	Percent(%) by revenue	0.0	0.0	0.0	0.0

Materials Management

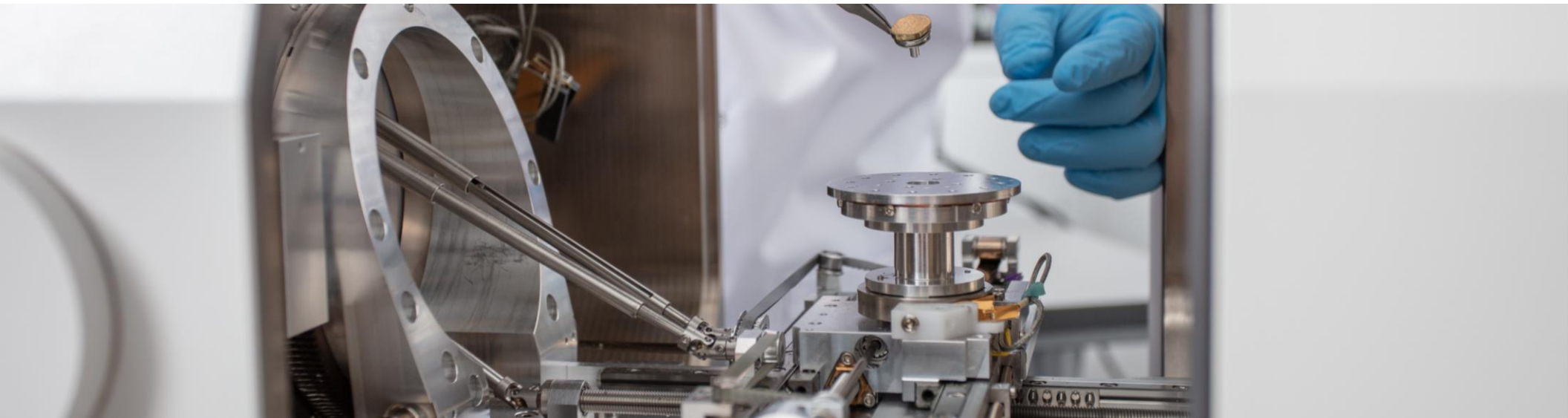
Indicator	Unit	2021	2022	2023	2024
Products that contain GHS Category 1 and 2 Health and Environmental Hazardous Substances (RT-CH-410b.1)	Percent(%) by revenue	We do not publicly disclose information on our proprietary formulations. However, every Jetti product undergoes a hazard assessment and industrial hygiene testing.			
<i>Percentage of such products that have undergone a hazard assessment (RT-CH-410b.1)</i>	Percent(%)	100	100	100	100
Strategy to manage chemicals of concern and develop alternatives with reduced human and/or environmental impact (RT-CH-410b.2)	Discussion and analysis	See page 12 of 2022 Sustainability Report.			

Governance and Business Ethics

Indicator	Unit	2021	2022	2023	2024
Corporate positions related to government regulations and/or policy proposals that address environmental and social factors affecting the industry (RT-CH-530a.1)	Discussion and analysis	See page 13 of 2022 Sustainability Report.			

Activity Metrics

Indicator	Unit	2021	2022	2023	2024
Production	Metric tons (t)	We do not publicly disclose production values.			



About This Report

This is Jetti's fourth annual sustainability disclosure, covering the 2024 calendar year unless otherwise specified. To support trend analysis, data from the 2021, 2022 and 2023 calendar years are also included, where available. Where references are made to the 2022 Sustainability Report, that link can be found [here](#).

Scope and Boundaries

This report covers 100% of Jetti's operationally-controlled facilities and workforce. It also contains information about policies and practices that apply at third-party contracted facilities, including warehouses, laboratory and testing facilities and partner mining operations. Unless otherwise indicated, data coverage applies only to Jetti employees and Jetti-operated facilities.

Verification and Assurance

The content of this report has been reviewed by the respective Jetti subject matter experts. We believe that it is an accurate, fair and balanced representation of our sustainability performance. The report has not been externally verified or assured.

Restatements

We have updated our analysis of water risk across our operations and have corrected the percentage of water consumed in areas with high baseline water risk.

For More Information

We welcome your questions and feedback.

Please contact: info@jettiresources.com

Disclaimers and Limitations

This document and the information contained herein (collectively, this "Report") is property of Jetti Resources (the "Company") and is being provided solely to inform third parties about the Company's business. This Report speaks only as of November 24, 2025; in making the Report available, neither the Company nor its advisors undertake any obligation to provide the recipient with access to any additional information or to update any of the information contained in this Report. This Report is for informational purposes only and does not constitute an offer to sell, or the solicitation of an offer to buy, the securities of the Company. It is not intended to form the basis of any investment decision. Any offer or sale of securities made by the Company, or any person on behalf of the Company, shall be made only pursuant to, and subject to the terms of, formal offering documentation or other definitive documentation. No representation, warranty or undertaking, expressed or implied, is or will be made or given, and no responsibility or liability is or will be accepted by the Company or by any of its directors, officers, employees, members, stockholders, affiliates, representatives or advisors in relation to the accuracy or completeness of this Report or any other written or oral information made available by or on behalf of the Company. The contents of this Report have not been independently verified, and they do not purport to be comprehensive or to contain all the information that a prospective investor or other business counterparty may need. This Report may contain forward-looking statements, including estimates and projections, which are subject to numerous risks and uncertainties that could cause actual results to differ materially from those projected or assumed in such forward-looking statements. The Company's historical results are not necessarily indicative of the results to be expected for any future periods. This Report may also contain estimates and other statistical data obtained from independent parties and by the Company relating to current and potential future market size and other data about the Company's industry and ultimate consumers. The Company has not verified such third-party estimates and data, and such estimates and data involve a number of assumptions and limitations. Any such third-party estimates, data or forward-looking statements are not to be viewed as factual, should not be relied upon as an accurate representation of future results and are inherently uncertain.